



# Qualys Network Passive Sensor v1.x

## Release Notes

Version 1.2

August 24, 2020

This new release of the Qualys Network Passive Sensor includes improvements and new features.

### **Qualys Network Passive Sensor (PS)**

[10G Model Support](#)

[4G Model without LCD](#)

[Serial Port Support](#)

[Changes in Define Internal Assets page](#)

**Qualys Network Passive Sensor 1.2 brings you many more improvements and updates! [Learn more](#)**

## Qualys Network Passive Sensor (PS)

### 10G Model Support

With this release, Network Passive Sensor supports appliance with 10G model. Prior to this release, appliances were available with 1G and 4G variants.

The new hardware variant has 4 x 1GbE, 4 x 10GbE interfaces. 10G appliance is only available without LCD interface

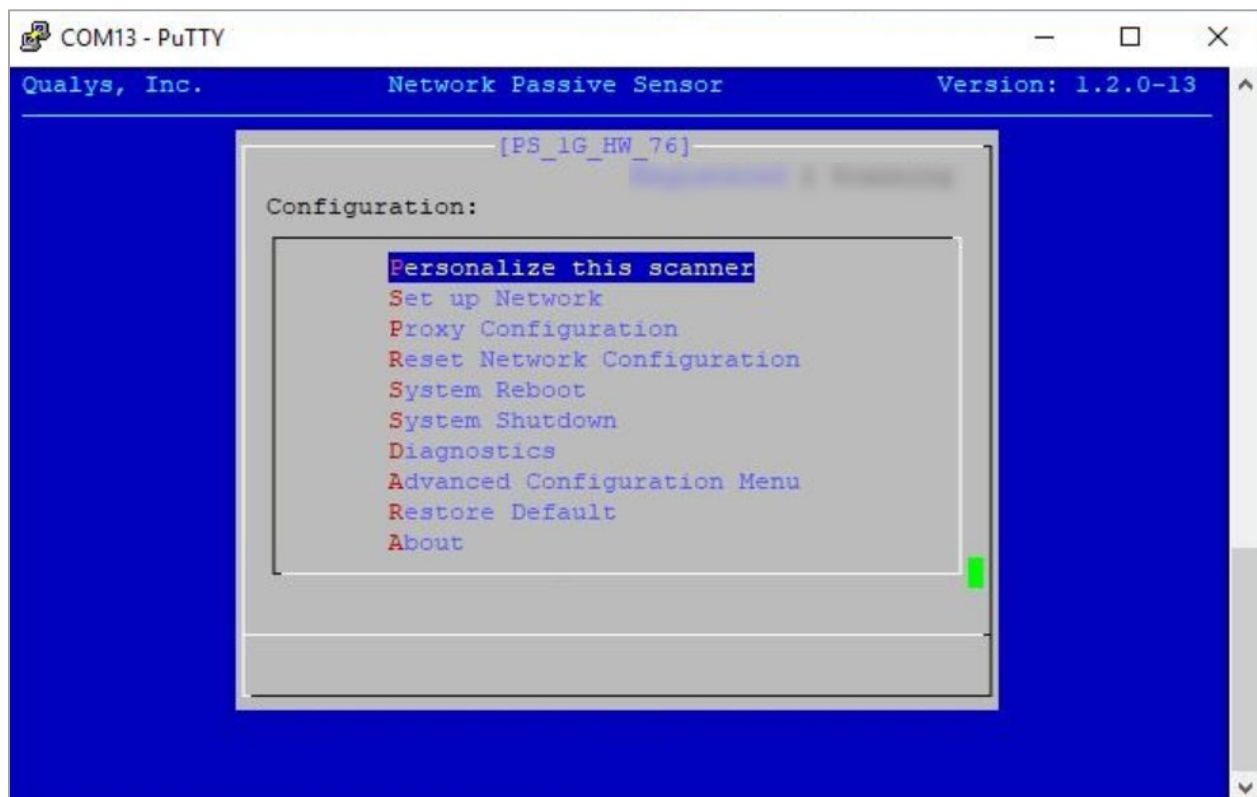
### 4G Model without LCD

With this release, 4G model of the appliance is also available without LCD interface. You'll be able to connect this appliance using serial port.

### Serial Port Support

With this release, you'll be able to connect and configure the appliance (with or without LCD) using serial port. With the help of PuTTY, you can connect the appliance attached to serial port on the computer.

Once you connect to the appliance using serial port, you can see all the options to configure the appliance.



## Changes in Define Internal Assets page

With this release, you can monitor and report assets with dynamic tags having 'IP Address In Range(s)' rule. A new option, **Use IP-Range Tags** is added on Define Internal Assets page. With this release, you'll be able to add dynamic tags with **Use IP-Range Tags** option.

**Use IP-Range Tags** option defines internal assets discovered with IP range tags. These are the dynamic tags created with 'IP Address In Range(s)' rule engine. Click Select Sensors to select sensor from the list of sensors for which you want to define internal asset. Click Select Tags to select IP tags from the list of tags for which you want to define internal asset.

To see this option, navigate to –

a) Sensors > New Sensor > Physical Sensor (or Virtual Sensor) > Define Internal Assets

or

b) Configuration > Internal Assets > Create New > Define Internal Assets

The screenshot shows the 'Define Internal Assets' page in the Qualys Express interface. The page title is 'Define Internal Assets' and it includes a sub-header 'Internal Assets'. The main content area contains the following elements:

- Define Internal Assets** section with a description: 'Define the IP ranges within your network that you want to monitor. These IP addresses will be individually tracked for traffic analysis.' and a note: 'The passive sensor senses all the traffic that you have mirrored. However, by defining internal asset ranges, you choose the assets you want to monitor and report on.'
- Three radio button options: 'Use Default Internal Ranges', 'Use IP-Range Tags' (which is selected and highlighted with a red box), and 'Custom Ranges'.
- A section titled 'Group Name 1' with an edit icon.
- 'Include the Following Sensors' section with a 'Select Sensors' link and a 'Remove All' link. It shows '1 SENSOR SELECTED' and a list containing 'ps\_140' with a close icon.
- 'Include the Following IP Tags' section with a 'Select Tags' link. It shows a list containing 'Internet Facing...' with a close icon.
- 'Type' dropdown menu set to 'DHCP'.
- 'Inventory these assets' checkbox, which is checked.
- '+ Add Another' link.
- 'Cancel' and 'Save' buttons at the bottom.

## Issues Addressed

- We have updated the [Virtual Appliance User Guide](#) to include "promiscuous mode" settings.
- Fixed an issue where TrafficSplitter module was crashing repeatedly and "Module Restarted" event was displayed even when there was no traffic through the interface. This primarily happens if a machine hosting VMware hypervisor is low on resources and cannot provide the required compute power to Passive Sensor appliance.