

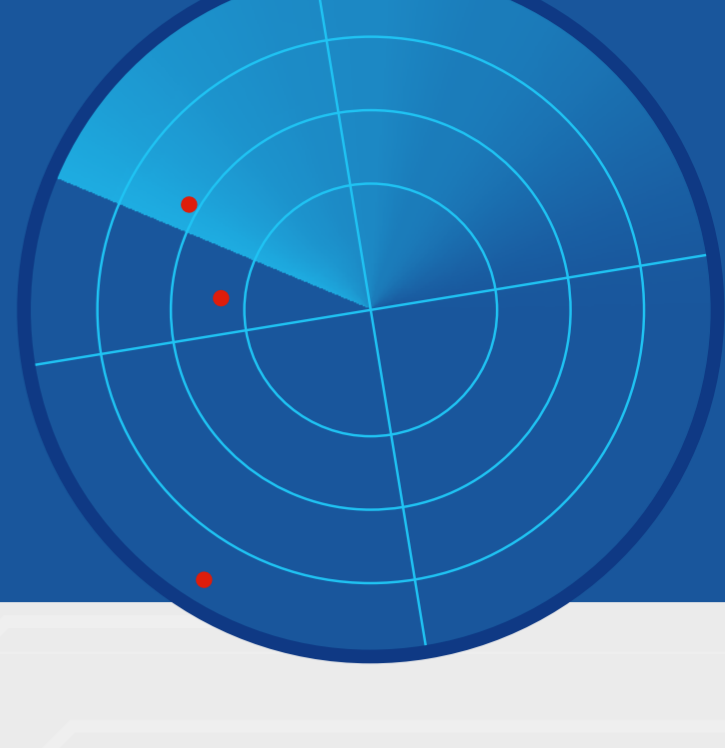
MISSION:

EARLY THREAT DETECTION



SMBs face all of the same security threats as larger enterprises—but with smaller budgets and more limited resources. The ability to preemptively discover threats can make or break SMB IT teams. This early discovery is especially important with the growing popularity of web apps installed on networks by anyone and everyone. What's a resource-strapped IT team to do?

DETECT THREATS EARLY



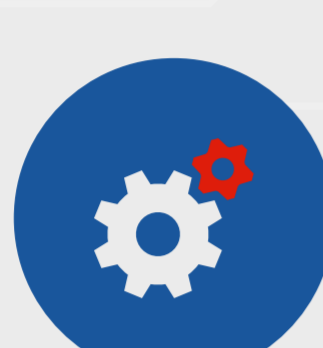
\$3.8 MILLION

Average consolidated total cost of a data breach¹

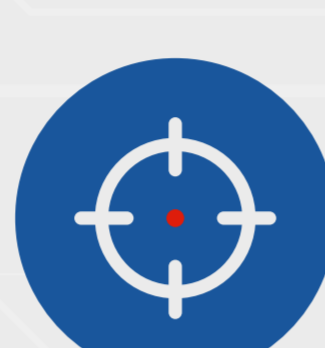
THE KEY?

Discover security threats *before* they become breaches.

A risk-based approach to security with early threat discovery can greatly benefit SMBs. According to the SANS Institute,² the most important aspects to consider for this approach are:



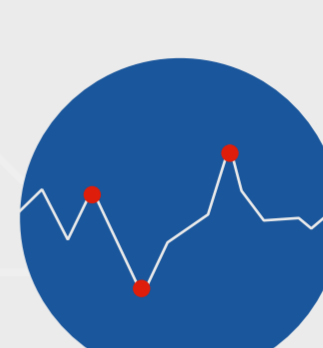
AUTOMATION
Minimize manual efforts of limited staff



QUICK WINS
Focus on areas with best returns



RISK-BASED SECURITY
Address highest risk items first



METRICS
Track compliance and identify gaps

THE CHALLENGE?

IT pros can't look everywhere on the network—across thousands of apps—at once.

SMB-SPECIFIC SECURITY NEEDS



60%

of all targeted attacks struck SMB organizations, in 2014.³

IT pros need a solution that can simply and effectively scan their networks, saving them time, complexity, and risk. From an SMB perspective, look for one that can:



Scale and cut costs



Reduce false positives



Find hidden malware



Provide consistent results

TO THE RESCUE: CLOUD-BASED SECURITY



90%

Number of avoidable breaches, if best practices and security controls were applied⁴

Five key elements to providing a continuous view of network security and compliance:



1. ASSET DISCOVERY



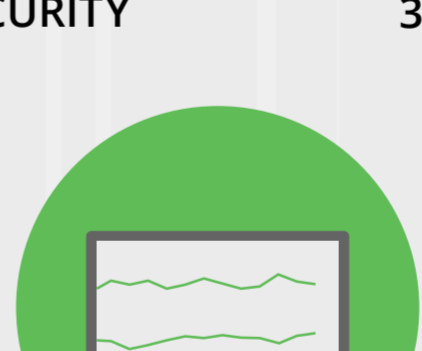
2. NETWORK SECURITY



3. WEB APP SECURITY



4. THREAT PROTECTION



5. COMPLIANCE MONITORING

The trick is to find a cloud-based platform that covers all five of these critical areas.

LET QUALYS LOOK OUT FOR YOU

With easy adoption and centralized management, Qualys has developed a solution that addresses SMB security needs and pain points. It meets IT requirements with:

- No hardware to buy or maintain
- Lower and predictable TCO
- Extreme scalability
- Compliance with internal policies and external regulations



READY TO LEARN MORE?

Sources:

¹ 2015 Cost of Data Breach Study, Ponemon Institute, May 2015. <http://www-03.ibm.com/security/data-breach/>

² E. Cole, "Six Steps to Stronger Security for SMBs," SANS Institute, 2015. <https://www.sans.org/reading-room/whitepapers/analyst/steps-stronger-security-smb-36037>

³ 2015 Internet Security Threat Report, Volume 20, Symantec, April 2015. https://www4.symantec.com/mktginfo/whitepaper/ISTR/21347932_GA-internet-security-threat-report-volume-20-2015-social_v2.pdf

⁴ 2015 Data Protection & Breach Readiness Guide, Online Trust Alliance, February 13, 2015. https://otalliance.org/system/files/resource/documents/dpd_2015_guide.pdf