



General Electric Custom Risk Measure & Eliminate with Qualys CAR

Corey Amsler

Director – Risk Management - EVM

Corey Amsler



Director – Risk Management – EVM:

- 14 years at General Electric



Extensive experience across spectrum of IT:

- 5 Years Vulnerability Remediation/Patching
- 3 Years Vulnerability Detection and Response



Board Member – March of Dimes Atlanta Market



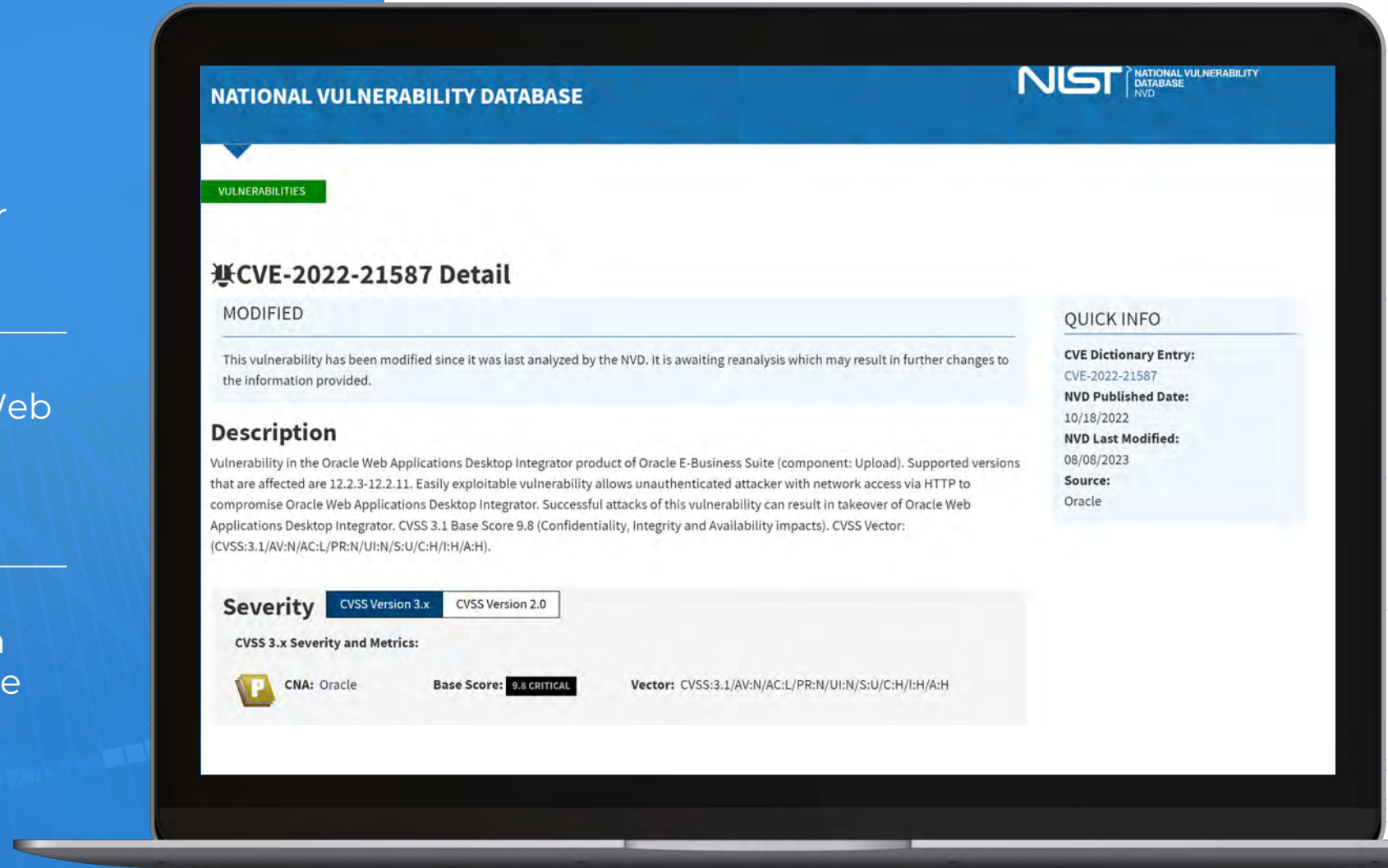
General Electric:

Every 2 seconds a plane takes off powered by GE aerospace technology

- ✓ Founded: 1892
- ✓ Headquarters: Boston, Massachusetts
- ✓ 150,000+ Employees
- ✓ Company Scope: Aerospace & Power

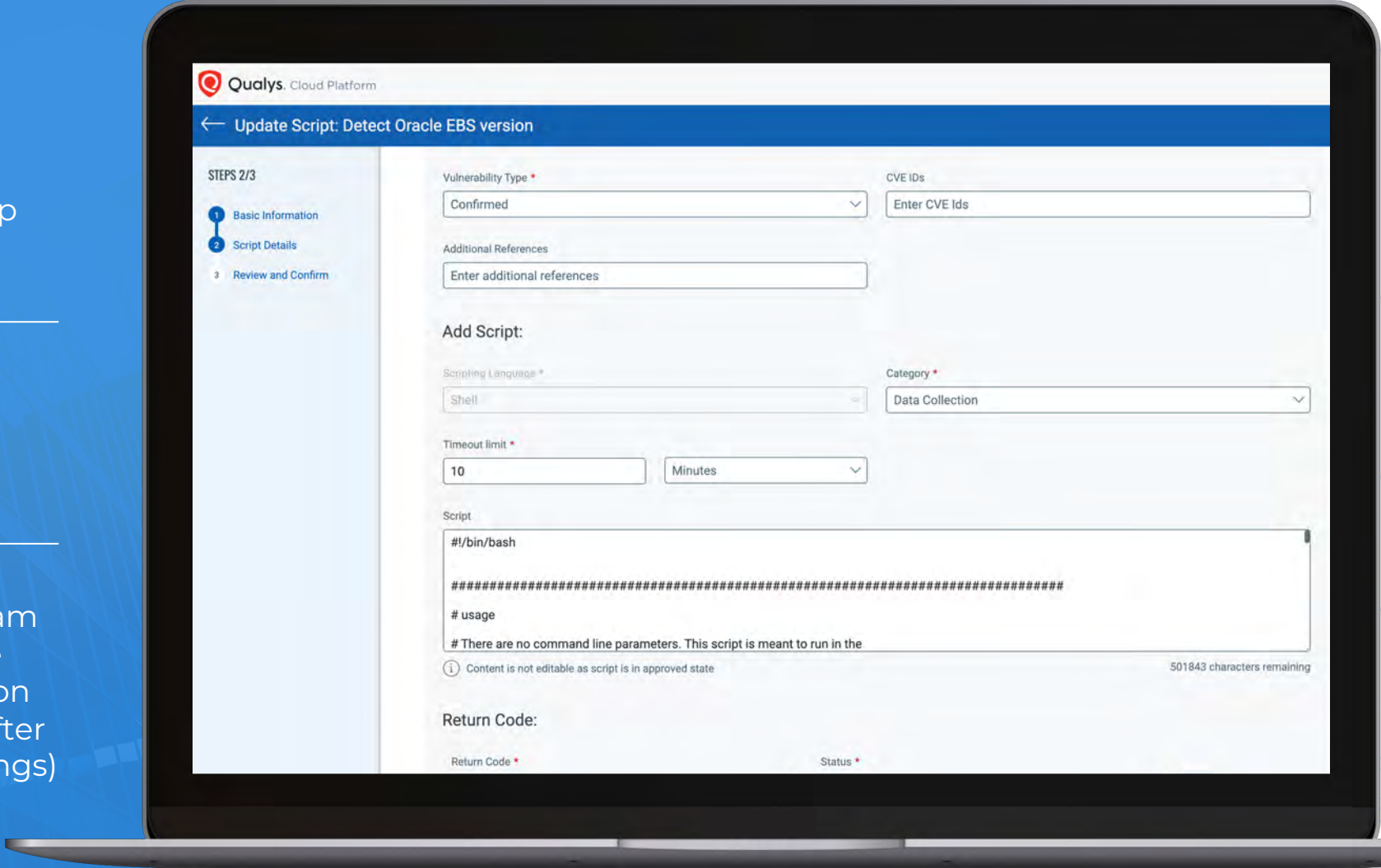
Problem

- ✓ Heightened awareness for CVE-2022-21587
- ✓ Oracle E-Business Suite Web Application Desktop Integrator Vulnerability
- ✓ Detecting specific vulns in custom installations Oracle E-Business Suite



Solution

- ✓ Leveraged 10+ year partnership with Qualys
- ✓ Received trial access to CAR (Custom Assessment and Remediation)
- ✓ Vulnerability Management team partnered with internal Oracle team and wrote initial detection script (modified it few times after taking into account the learnings)



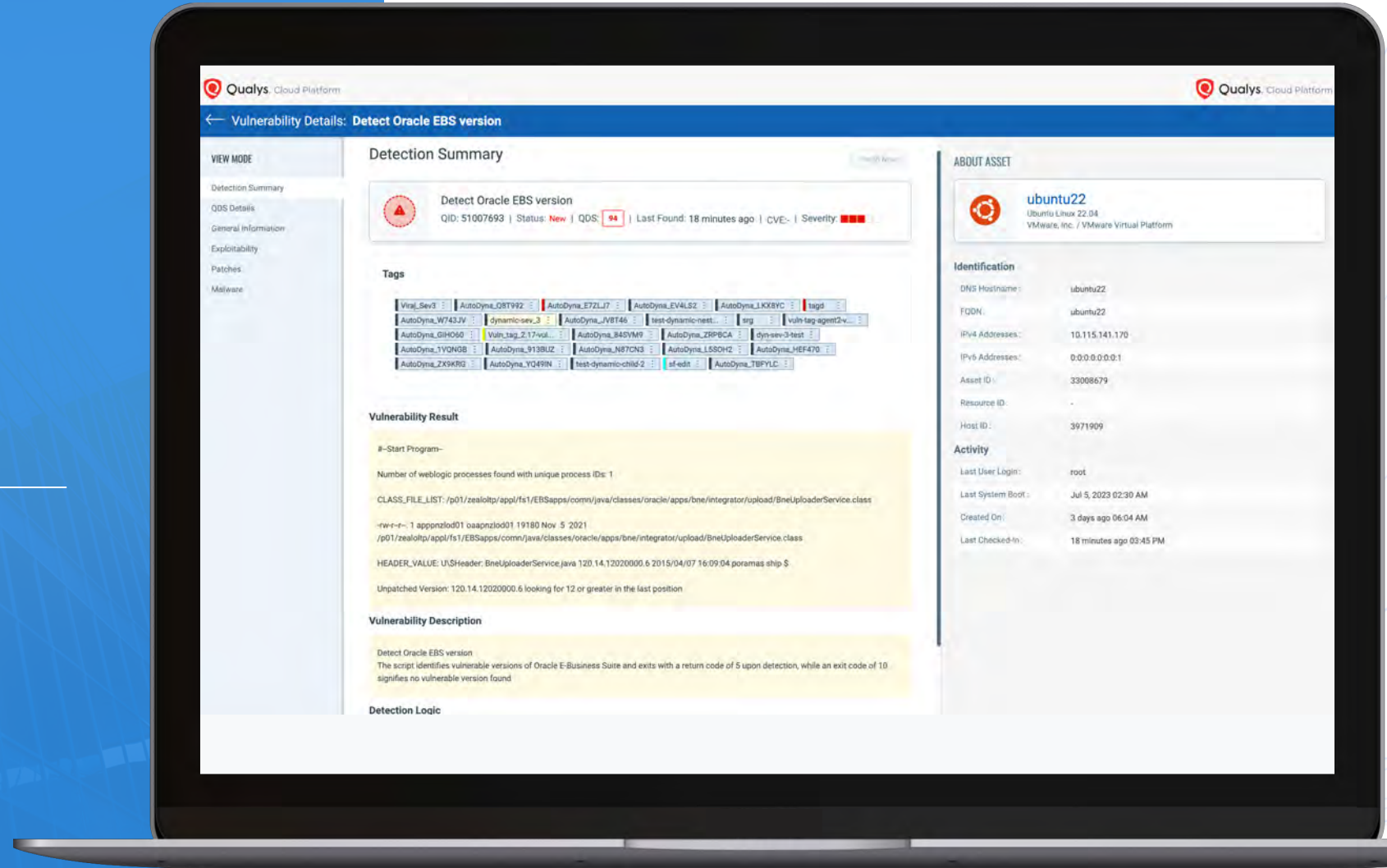
Solution Deployment



Deployed script across environment and created custom QID



This capability allowed us to **follow all of our standard** downstream processes





Using Custom QID: Our Outcomes

Outcome:

By using custom QID



95% Risk Reduction

Reduced exposure Risk of the CVE



Ready for the Next Zero Day

Ready to quickly measure and eliminate the next zero day

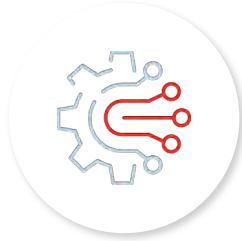
Outcome:

Future Ready.



Expanded our vulnerability discovery toolset

Be ready for the unknowns



Seamless integration into our downstream processes

Invaluable to us



Strengthened relationships with application teams

Priceless to our organization



Corey Amsler

Director – Risk Management –
EVM @ General Electric



www.linkedin.com/in/coreyamsler/
www.gevernova.com



